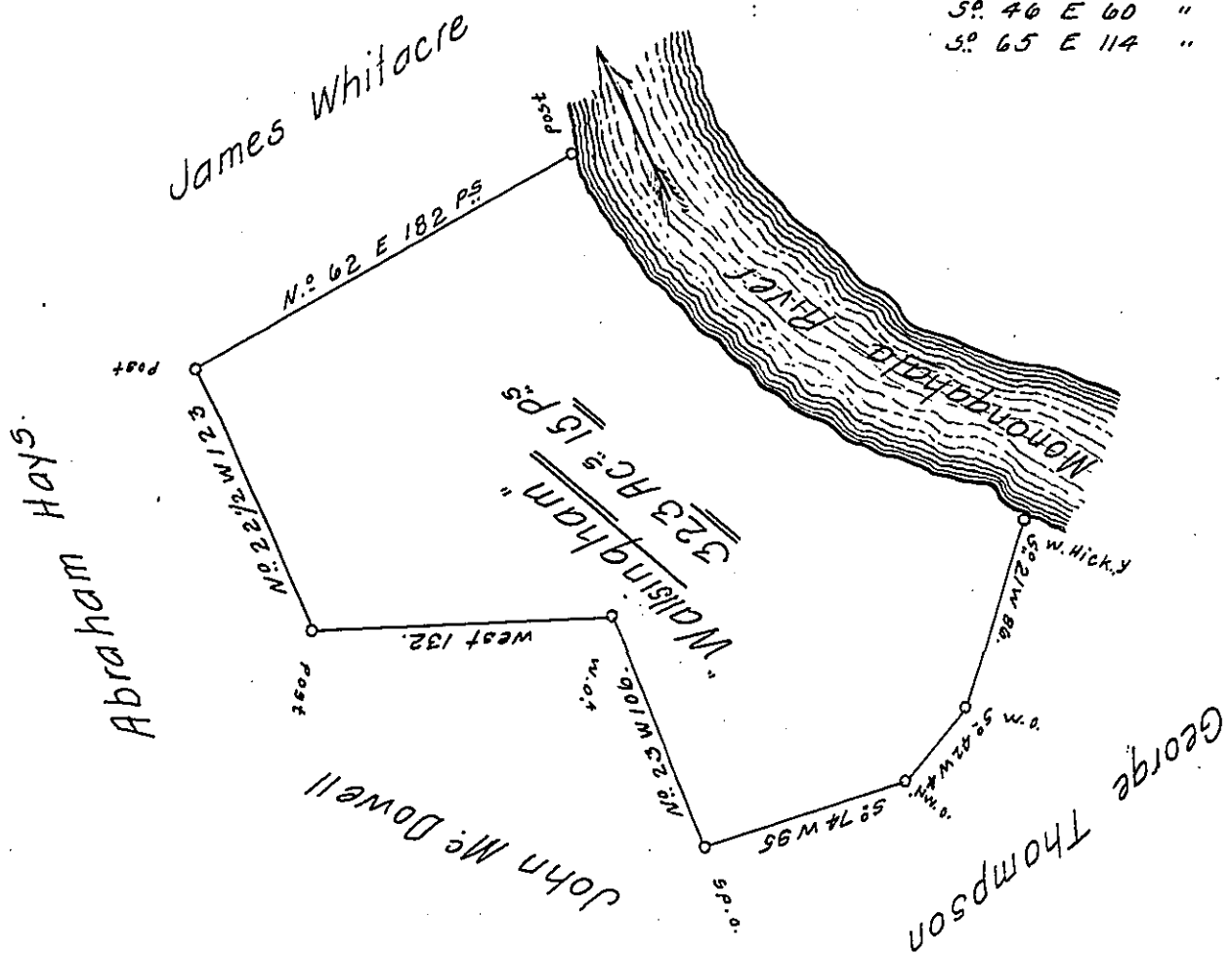


Courses & dist<sup>ce</sup> up y<sup>e</sup> River  
 59. 32 E 55 P<sup>s</sup>  
 59. 52 E 40 "  
 59. 46 E 60 "  
 59. 65 E 114 "



A Draught of a Survey called "Walsingham" situate on the Ohio River in Washington County containing 323 A<sup>s</sup> 15 P<sup>s</sup> and the usual Allow<sup>ce</sup> for Highways &c. executed March 26<sup>th</sup> 1788 in Pursuance of a Warr<sup>t</sup> granted to Tho<sup>s</sup> Wallace Sen<sup>r</sup> for 300 A<sup>s</sup> dated August 26<sup>th</sup> 1785

Jn<sup>o</sup> Lukens Esq<sup>r</sup> S.G!

Presley Nevill }  
 Matt<sup>w</sup> Ritchie } 0.5<sup>s</sup>

IN TESTIMONY that the above is a copy of the original remaining on file in the Department of Internal Affairs of Pennsylvania, made conformably to an Act of Assembly approved the 16th day of February, 1833, I have hereunto set my Hand and caused the Seal of said Department to be affixed at Harrisburg, this twenty third day of April 1908.

*Henry Houck*  
 Secretary of Internal Affairs.